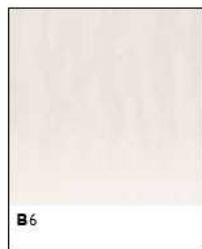


Standard Colours

Tipo Chamois / Chamois Type



Tipo Inca / Inca Type



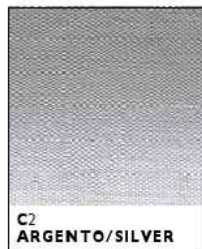
Tipo Parotega / Parotega Type



Tipo bison / Bison Type



Tipo Juta / Juta Type



Tipo Damaco / Damasco Type

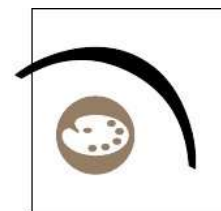


Tipo Lunaire / Lunaire Type

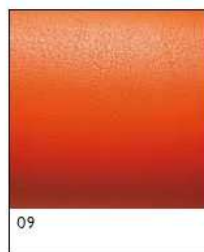


Protezione fuoco / Flamma retardant
NF M2, BS 5852 IS-0+1, DIN EN
1021-1+2, DIN 4102 (Part 1, B2),
MVSS 302, DIN 53428 (Part 2), UNI
5175/97 (1.1M)

Tipo Resincolour / Resincolour Type

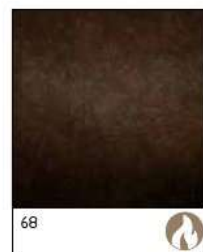


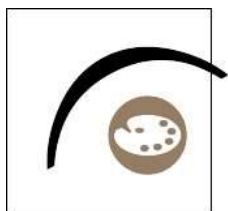
**Standard
Colours**



Protezione fuoco /
Flame retardant
NF M2, BS 5852 IS-0+1, DIN EN
1021-1+2, DIN 4102 (Part 1, B2),
MVSS 302, DIN 53429 (Part 2),
UNI 9175/97 (1.IM)

Tipo Scamosciato / Shammy leather Type





Optional Sky



50% Materia prima naturale rinnovabile.
30% Da materiali di riciclo.
50% Natural and renewable origin.
30% Of recycled origin.



Protezione fuoco / Flama retardant
NF M2, BS 5852 IS-0+1, DIN EN
1021-1+2, DIN 4102 (Part 1, B2),
MVSS 302, DIN 52438 (Part 2), UNI
5175/87 (1JM)

Nature base standard per naturali / Standard for naturali



Tipo Hybria / Hybria Type



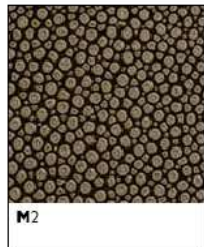
Tipo Soroma / Soroma Type



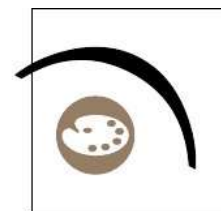
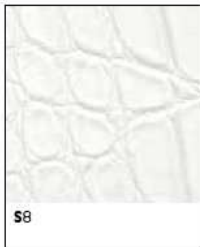
Tipo Solino / Solino Type



Tipo Manta / Manta Type

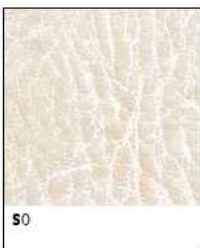


Tipo Socodilo / Socodilo Type



Optional
Sky

Tipo Saramo / Saramo Type



Antibatterico conforma
a JIS Z 2901.
Antibacterial according
to JIS Z 2901.



Rispetta gli standard
medici DIN EN ISO
10592-5+10.
Fulfills medical standard
DIN EN ISO 10592-5+10.



Tipo Satin / Satin Type

